



The Park Synagogue Bulletin

Anshe Emeth Beth Tefilo Congregation

Offices/School/Friday Evening Services: 27500 Shaker Boulevard, Pepper Pike, OH 44124 (216) 371-2244

Shabbat Morning/Evening Services: 3300 Mayfield Road, Cleveland Heights, OH 44118

November 2013 • Heshvan/Kislev 5774 parksyn.org

A PEEK AT PARK PROGRAMMING

Park Synagogue is known for providing timely, important “news you can use” every month. This November is no exception! Here are just a few of the many events that promise to inform, delight and educate the entire community.

Wealth Management at a Crossroads: Responding to a Changing Financial World

Presented by the Men’s Club

Sundays, Nov. 3, 10 and 17
9:30 am breakfast • 9:50 am program
Park Synagogue East

Join us for this three-part seminar featuring local financial experts discussing College Planning, US & World Economy, and Retirement & Estate Planning.

Speakers include:

Ron Gross • Neil Gurney
Denny Linden • Mark Sniderman • Alan Yanowitz

You’re sure to learn something new!

See more information on the back cover.



Navigating the Patient Protection & Affordable Care Act (“Obamacare”)

Presented by the Park Social Action Committee

Monday, November 18
7:30 pm • Park Synagogue East

Let our speakers **Jodi Mitchell**, *Mt. Sinai Foundation Health Policy Program Officer*, and **Diane Suchetka**, *Plain Dealer Health Reporter*, help you navigate the Affordable Care Act, dispel myths, address concerns and questions, and discuss how the ACA may impact you.

This event is free and open to the community.

See more information on page 3.



Family Chanukah Shabbat

Presented by the Wolf Religious School in conjunction with the Cyndi Goffman Chanukah Fund

Friday, November 29

6:00 pm • Park Synagogue East

Join us for this extra-special Shabbat service with Chanukah klezmer music, gifts for kids under 13, and a delicious Hot & Hearty Oneg!

See more information on page 5.



New Around Here?
See page 6 for a New Member Welcome service!

Lighting the Chanukah Candles



The kindling of the lights is the most significant ceremony of the Festival. It should be observed in the spirit of reverence and solemnity, and in a beautiful and impressive manner.

On the third night of Chanukah, **Friday, November 29**, the Chanukah candles are kindled before nightfall and before the Shabbat candles.

On **Saturday evening, November 30**, the Chanukah candles are kindled after Havdalah.

On all other nights, the Chanukah candles should be kindled after nightfall. The Menorah should be placed near the window for all to see, safely away from curtains and shades.

Instructions for placing and lighting the Chanukah candles: As your face your Chanukah, place the candles in their holders from right to left. As you light them, you light them from left to right, starting with the newest candle.

Chanukah Blessings

Recited after the Shamash, the Helper candle, is lit but before the other candles are kindled.

ברוך אתה יי אלהינו מלך העולם, אשר קדשנו במצותיו וצונו להדליק נר של הנגה.

Baruch Ata Ah-do-nai Eh-lo-haynu Melech Ha'olam asher kid'sha-nu b'mitz-vo-tav vitzi-va-nu l'had-lik nayr shel Chanukah.

Blessed are You, O Lord our God, King of the Universe, who has sanctified us with Your commandments and commanded us to kindle the lights of Chanukah.

ברוך אתה יי אלהינו מלך העולם, שעשה נסים לאבותינו בימים ההם בזמן הזה.

Baruch Ata Ah-do-nai Eh-lo-haynu Melech Ha'olam she'Asa ni'sim la'avotaynu ba' ya'min ha'haym ba'zma ha-zeh.

Blessed are You, O Lord our God, King of the Universe, who performed miracles for our ancestors in days of old at this time of the year.

(Recite the prayer below on the first night only)

ברוך אתה יי אלהינו מלך העולם, שהחיינו וקיימנו והגיענו לזמן הזה.

Baruch Ata Ah-do-nai Eh-lo-haynu Melech Ha'olam she-che-ya-nu, v'ki-yi ma-nu- v'hi-gi-a-nu- la'z'man ha-zeh.


Blessed are You, O Lord our God, King of the Universe, who has kept us alive, sustained us and permitted us to celebrate this season.

What's Inside

	page
Park Social Action	3
Men's Club.....	6, 8, back cover
Gesher / Young Mensches.....	4
Keruv Connection.....	5
Park Senior Adults.....	6
Sisterhood / Mazel Tov / Todah Rabbah	7
New Generation.....	8, 10
Help Wanted / New Generation.....	8
Youth Group News & Events / Park Preschool	9
Family Education & Wolf Religious School.....	10
Women's Rosh Chodesh Group.....	11
B'nei Mitzvah	12
Calendar	13
GCC Update.....	14
Anniversaries / Parshiot / In Memoriam	15
Adult Education.....	16
Gifts to Funds	16-18

Upcoming Events

	page
NOVEMBER	
Hevra Kadisha Scholar-in-Residence	3
Affordable Care Act Discussion	3
Chanukah Activities	5
Blue Skies.....	6
Sisterhood Programs and Book Club.....	7
Youth Group Activities.....	9
Magical Family Havdalah.....	10
Mahj & Bridge Mingle.....	11
Speakers' Series on Wealth Management ...	back cover
DECEMBER	
Good to the Last Drop Coffeehouse.....	4
Rock & Roll Revolution.....	4
Young Mensches' Game Night	4
New Member Welcome.....	6
Family Fun Night with the Cavs	8
Minyannaire of the Year Award	8
WRCG Drum Circle.....	11
JANUARY	
Sports Banquet & Steak Dinner	6
WRCG Scholar-in-Residence.....	11



Look for this icon - it indicates Park events that are especially good for prospective members!

Join the **Park Social Action Committee** for an informative discussion on

NAVIGATING THE PATIENT PROTECTION & AFFORDABLE CARE ACT (“OBAMACARE”)

Monday, Nov. 18 • Park Synagogue East
7:15 pm—Doors open • 7:30 pm—Program begins

INVITE A FRIEND

In March 2010, President Obama signed comprehensive health care reform into law. The *Patient Protection and Affordable Care Act* (ACA) makes health insurance and preventative care more accessible to millions of uninsured Americans beginning January 1, 2014.

Come to hear featured speakers **Jodi Mitchell**, *Mt. Sinai Foundation Health Policy Program Officer*, and **Diane Suchetka**, *Plain Dealer Health Reporter*, and learn more about the ACA. They will help us navigate the Affordable Care Act, dispel myths, address your concerns, answer questions, explain the open enrollment, and discuss how the ACA may impact you, your healthcare, your healthcare providers and the nation.

Free and open to the community.

RSVP's requested to Ellen Petler at epetler@parksyn.org or (216) 371-2244, ext. 122.

RSVP NOW



Saturday, November 16 • 10:30 am
Park Synagogue Main Parlors

Please join us for the sweetest service on Earth! Our monthly fun-filled **Family Ruach Shabbat** morning program is especially **designed for 1st through 5th grade families**. Following the Ruach Service, we will join the main service for “Ein Keloheynu.”

Held every third Saturday of the month, the next Ruach Family Service will be **Saturday, December 21**. Please contact Executive Educator, **Shani Kadis** at (216) 371-2244, ext. 165 or skadis@parksyn.org for more information.

Jewish Burial Traditions and the Transformative Effect of a

HEVRA KADISHA

Community Scholar-in-Residence Weekend

Friday, November 15 – Sunday, November 17

Join **David Zinner**, Executive Director of Kavod ve Nichum, as he leads a Scholar-in-Residence Weekend for the entire Cleveland Jewish community. Learn about the traditions surrounding the preparation for Jewish burial and the transformative impact that creating a local Hevra Kadisha can have on a Jewish community.

FRIDAY, NOVEMBER 15

Our Jewish Life Cycle: What Death Can Teach Us About Life

Kabbalat Shabbat services and discussion followed by oneg

Temple Emanu El • 7:00 - 10:00 pm

4545 Brainard Rd. (at Emery Rd.), Orange Village

SATURDAY, NOVEMBER 16

The Spirituality of Life and Death

Shabbat morning sermon at approximately 10:30 am.

Ethical, Environmental and Financial Issues in the Burial vs. Cremation Discussion

A Lunch & Learn in the Parlors, following services.

\$10 per person. RSVP's required.*

Park Synagogue Main

3300 Mayfield Rd., Cleveland Heights

RSVP NOW

SUNDAY, NOVEMBER 17

The Ritual of Tahara: A Cleansing of our Spiritual Life

Coffee and schmooze following morning minyan

B'nai Jeshurun • 9:00 - 11:00 am

27501 Fairmount Blvd., Pepper Pike

SUNDAY, NOVEMBER 17

Mock Tahara Demonstration

A mock Tahara demonstration for those interested in participating in this important mitzvah

The Laura and Alvin Siegal Lifelong Learning Program

Beachwood Facility • 1:00 - 3:30 pm

26500 Shaker Blvd., Beachwood

SUNDAY, NOVEMBER 17

The Power of the Most Private Mitzvah

A community presentation

The Laura and Alvin Siegal Lifelong Learning Program

Beachwood Facility • 4:00 - 5:30 pm

26500 Shaker Blvd., Beachwood

***To RSVP for the Lunch & Learn**, send a check (**payable to Park Synagogue**) to: Lunch & Learn, Park Synagogue, 27500 Shaker Blvd., Pepper Pike, OH 44124 or **pay online at parksyn.org**. Questions? Contact **Rabbi Marcus** at symarcus@parksyn.org or (216) 371-2244.

ROCK & ROLL REVOLUTION

SATURDAY DECEMBER 14TH @ B'NAI JESHURUN
27501 Fairmount Boulevard, Pepper Pike

DINNER * DANCING * DRINKS

7:30 PM DOORS OPEN • BAND 8:00-11:00 PM
21 & OVER • 60's ATTIRE ENCOURAGED

**DANCE TO YOUR
FAVORITE BEATLES'
TUNES WITH**



**REVOLUTION
PIE**

\$18 per person before December 9
\$22 per person at the door

Price includes dinner with soft drinks and beer, great music and dancing! A wine tasting station will offer a variety of kosher wines for a small donation.

RSVP and pay online at parkmensclub.org
or mail the RSVP form below.



Brought to you by the Men's Clubs of B'nai Jeshurun, Park Synagogue and Shaarey Tikvah

RSVP NOW

Rock & Roll Revolution

adults (21+ only) @ \$18 each
\$ _____ total enclosed (**payable to
Cleveland Federation of Jewish Men's Clubs**)

Mail reservation and check by **December 9th** to:

**Ken Vinocur, 2834 Meldon Boulevard,
Beachwood, OH 44122**

Name(s): _____

Address: _____

Phone: _____

Email: _____

Park's Gesher Group presents

Good to the Last Drop Coffeehouse

featuring folk music by **Chuck Fink**

Saturday, December 7 • 7:30-10:30 pm
Park Synagogue East

Let folk music take you back in time to the civil rights and peace movement era! Sit back, listen to folk musician Chuck Fink, and sing along, if you like, to old favorites of Peter, Paul & Mary, the Kingston Trio, Joni Mitchell, and many more popular folk musicians of the 60's. Enjoy munchies, soft drinks and wine during the music, followed by a delicious coffee/tea bar and pastries.

Cost: \$18/Park Members • \$20/Guests

Prepaid RSVP's required by **Friday, November 22nd**. Questions to Ellen Petler at epetler@parksyn.org or 216-371-2244 ext. 122.

Send check (**payable to Park Synagogue**), all names included in reservation, email address and phone number to:

**Gesher Coffeehouse, Park Synagogue,
27500 Shaker Blvd., Pepper Pike, OH 44124.**

Sponsored by Park's Gesher Group, for baby boomer age members & guests.

**INVITE A
FRIEND**

ATTENTION 20 & 30 YEAR OLDS: UPCOMING YOUNG MENSCHES' EVENT

Young Mensches, Powered by Park, is Park's new group for single and married people in their 20's and 30's. Get together for fun with young members just like you!

Check the Young Mensches' facebook page, facebook.com/pages/Young-Mensches, for details.

**THURSDAY,
DECEMBER 5**



7:00 pm
**Park
Synagogue
East**

VODKA & LATKES GAME NIGHT



HAPPY CHANUKAH



Join us for these family events celebrating the Festival of Lights!

VISIT THE ANNUAL
WOLF RELIGIOUS SCHOOL

Dreidel Shop

SUNDAY, NOV. 10
9:15 AM – 12:30 PM

MONDAY, NOV. 11
3:30 – 6:15 PM

PARK SYNAGOGUE EAST

family chanukah shabbat

Friday, November 29 • 6:00 pm • Park Synagogue East
Sponsored by the Cyndi Goffman Chanukah Fund and the Wolf Religious School

Celebrate Shabbat and the third night of Chanukah with this very special service featuring:



Chanukah klezmer music!

Chanukah gifts for all children
12 and under!



A delicious Hot & Hearty Oneg!

To celebrate the life of Cyndi Goffman, we are accepting donations to the **Cyndi Goffman Chanukah Fund** for the purpose of providing gifts to the children of Park families who need a little help this year. Donations may be made online at parksyn.org (follow the link to our temporary website), or by mailing a check (made out to **Park Synagogue**, with "Cyndi Goffman Chanukah Fund" noted in the memo line) to: **Park Synagogue, 27500 Shaker Blvd., Pepper Pike, OH 44124.**

[DONATE NOW](#)

The event is free and open to all congregants, however **RSVP's are required by November 22** to

[RSVP NOW](#)

Pam Porter at pporter@parksyn.org or (216) 371-2244, ext. 160.

The Park Synagogue Wolf Religious School graciously supports this event through Congregational Enrichment Funds.

Newborn Chanukah Shabbat

Saturday, November 23

All Park families who have celebrated the arrival of a child since last Chanukah will be honored at Shabbat Services on the morning of November 23. Chanukah gifts given to each Park child honored on this Shabbat are provided through the generosity of the *Barry P. Garson Children's Chanukah Fund*.

Please contact **Eva** at eva@parksyn.org or (216) 371-2244, ext. 127 by **Monday, November 18** to RSVP and have your family called to the bima that day.

Don't miss this festive celebration!

[RSVP NOW](#)

Join Park Synagogue's Keruv Connection for
NOT JUST POTATO LATKES

CREATIVE CHANUKAH CUISINE

Tuesday, November 12 • 6:30-9:00 pm • Park East Kitchen

Are you new to Judaism, to the celebration of Chanukah, or just want to pump up your Jewish cooking skills? Join Park's Keruv Connection for this hands-on class taught by **Joan Kekst**, Jewish cooking expert. The class will explore Chanukah cuisine—traditional to modern. Come ready to roll up your sleeves and help cook! Everyone will get to taste the dishes and take home the recipes. **Rabbi Sharon Marcus** will also talk about the significance of Chanukah in our modern world and how to explain the holiday to non-Jewish family members. Bring your questions for both Joan and Rabbi Marcus.



Cost: \$10.00 for Park members • \$12.00 for Guests

Prepaid reservations are required by **November 5th**. Send name(s), phone number, email address, and check (payable to **Park Synagogue**) to: **Creative Chanukah Cuisine, Park Synagogue, 27500 Shaker Blvd., Pepper Pike, OH 44124.**

Questions? Contact **Ellen Petler** at epetler@parksyn.org or (216) 371-2244 ext. 122.

Sponsored by the Keruv Connection, Park's Outreach program for Jews-by-Choice and their partners, interfaith families, and anyone contemplating conversion or intermarriage.



**Park Senior Adults & B'nai Jeshurun Hazak
present their annual concert and dinner**



BLUE SKIES

Jewish Songwriters in the Golden Land

**Featuring vocalists
Joan Ellison &
Mark Flanders**

Sunday, November 10 • Park Synagogue East • 3:30 pm

Take a musical trip all the way from the Great Synagogue of Vilna to the vaudeville houses, Broadway theaters and Hollywood sound stages featuring **Joan Ellison** and **Mark Flanders**, with pianist **Jason Aquila**! Hear songs from all eras of musical history composed by George Gershwin, Irving Berlin, Jerome Kern, Harold Arlen and many more wonderful Jewish songwriters. Enjoy a delicious table-served dinner following the concert.

Time: 3:30 - 4:00 pm Registration & Social Hour
4:15 - 5:15 pm Performance, with dinner following

Cost: \$25 for Park/B'nai Jeshurun Hazak Members • \$28 for Guests

Prepaid reservations are required by November 1st. Open to all ages. For questions or to request transportation to the event, please contact **Ellen Petler** at epetler@parksyn.org or **(216) 371-2244, ext. 122.**

Adele Ack and Illene Rosewater are Park Co-Chairs of the event. Co-sponsored by Park Senior Adults and the B'nai Jeshurun Hazak Group, with support from the Park Synagogue Cultural Arts Fund for Seniors and Fader Senior Adult Fund.

BLUE SKIES

_____ # Park Synagogue/B'nai Jeshurun Hazak Members at \$25 each
_____ # Guests at \$28 each \$ _____ Amount Enclosed
(checks payable to Park Synagogue)

Name(s)* _____

Address _____

City _____ Zip _____

Phone _____ Email _____

Please seat me with: _____

Entrée Choice (give number)

_____ # Chicken Schnitzel _____ # Eggplant Schnitzel

Send all names included in your reservation and a check (payable to Park Synagogue) to **Blue Skies, Park Synagogue, 27500 Shaker Blvd., Pepper Pike, OH 44124 by November 1st.*



Join the Park community for our
**New Member
Welcome**

**Friday, December 6 • 6:00 pm
Park Synagogue East**

New members, old members and everyone in between, join us to welcome our newest Park members at the Family Shabbat Service, followed by a special Hot & Hearty Oneg!

Love to Sing?

Add your voice to the Park Volunteer Choir. This entertaining group performs once a month at the Friday Evening Family Shabbat service as well as in the community twice a month. The choir and their lovely selections always receive great appreciation! *No experience or audition necessary.* Contact Danny Silverstein to find out how to get involved with this flexible and fun group.



Danny Silverstein
(330) 487-5441
daniel.m.silverstein@gmail.com

SAVE THE DATE FOR THE MENS' CLUB

**ANNUAL
SPORTS
BANQUET &
STEAK DINNER**



SUNDAY, JAN. 26 AT PARK EAST

SISTERHOOD

Join us every Tuesday at Park Synagogue East for educational topics and entertainment.

10:00 am Fun with Yiddish featuring Annabelle Weiss

10:45 am Potpourri

11:30 am Discussion with Rabbi Skoff

12:15 pm Lunch* (reservations required)

1:00 pm Weekly Program

* Cost for lunch is \$7.00 per person. To make reservations, please call Terry Juntoff at (216) 464-2364.

November Schedule

Tuesday, November 5

Potpourri: **Dr. Jeff Mangel** presents "Taking Control of Your Health."

Weekly

Program: **No program** - Board Meeting

Tuesday, November 12

Chair of the day is Sara Lee Schumer

Potpourri: **Belle Likover**, community activist for senior adults, will give an update.

Weekly

Program: **Greg Benedetto** will entertain us with a guitar performance.

Tuesday, November 19

Chair of the day is Etty Hoffman

Potpourri: **Sister Mary Ann Flannery**, Director of Jesuit Retreat House, will enlighten us.

Weekly

Program: **Chanukah Celebration with songs**

Tuesday, November 26

Thanksgiving Break - no meeting/classes

Rabbi Armond & Anne Cohen Sisterhood Book Group

Monday, November 4 • 10:15 am • PSE Library

Join us to discuss

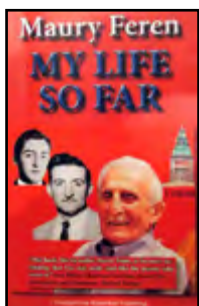
MY LIFE SO FAR

by Maury Feren

Maury will visit us to discuss his latest book and answer questions.

All are welcome! Questions?

Please call **Etty Hoffman** at (216) 831-3620 or **Gerry Powers Volper** at (216) 464-9166.



Todah Rabbah

OPERATION ISAIAH FOOD COLLECTION HELPS FEED THE HUNGRY!



Thanks to the generosity and volunteer efforts of so many Park members, the 2013 Operation Isaiah Food Collection was a huge success! Thanks goes to everyone who donated food, contributed to the

Park Hunger/Mitzvah Fund, and volunteered their time to help pass out Operation Isaiah bags, sort the food, and pack and deliver bags of food in the community. Deliveries went to JFSA clients in need, the JFSA Kosher Food Bank, and the Heights Emergency Food Center.

A special thank you goes to the 2013 Operation Isaiah Co-chairs **Ina Burday, Barbara Herman and Amy Kaplan** (pictured above) for all their help in coordinating this project from start to finish! Todah rabbah to all the dedicated Operation Isaiah volunteers: **Joe Arnoff, Sandy Baumal, Myrna Arlen Bloch & Kurt Bloch, Ina Burday, Katie & Dennis Cahn, Sandy Ellis, Arlene & Norman Golovan, Barbara Herman, Sandi & Martin Horwitz, Amy Kaplan, Jan Kleinman, Marcia Korenstein, Carol Leibow, Maxine Leikin, Karen Paydock, Lil Rubin, Diane & Jared Schnell, Ruth Schoenberg, Susan Schwarzwald, Elaine Shaffer, Steve Steinreich, and Bob Turoff.**

Mazel Tov!

Mazel tov to **Art Hirsh** for receiving the *Gert Himmel Adell Volunteer of the Year Award* from Menorah Park.

Mazel tov to **Amy & Ronnie Levin** on the birth of their daughter, **Naomi Belle**, who joins big sister, **Julia**. Grandparents are **Zeev Friedman, Robin Friedman, and Arlene & Sander Levin**. Great grandparents are **Ida Friedman** and **Gerald & (of blessed memory) Rita Weiner**.

Mazel tov to **Lauren & Jeff Timen** on the birth of their daughter, **Summer Evelyn**, who joins big brother, **Jake**. Grandparents are **Carol & Rob Stein**, and (both of blessed memory) **Barbara & Lee Timen**.

Mazel tov to **Sam Greenspan & Angie Greenup** on their recent wedding held in California. Sam's parents are **Amy & Ron Greenspan**, and his great grandmother is **Martha Vinocur**.

Mazel tov to **Efrat & Doug Horwitz** on the birth of their son, **Ayden**, who joins big brothers **Ryan** and **Tyler**. Grandparents are **Helen & Larry Horwitz** and **Malca & Bernardo Flasterstein**. Great grandfather is **Moises Flasterstein**.

The Crown Society & The David Society

A special **Thank You** and **Yasher Koach** to our Crown Society and David Society members for your continuous support!

Crown Society members generously give at levels of \$10,000 to \$50,000 above dues. David Society members contribute at least \$5000 above dues.

If you are interested in becoming part of the Crown or David Societies, helping to ensure the vibrancy of Park Synagogue and Jewish life, please contact **Rabbi Skoff** at (216) 371-2244 or **Andy Randall** at (216) 903-6334.

Crown Society Members

Hedy & David Adler
 Lois, Jeffrey & Marti Davis
 Darlene & Robert Duvin
 Joyce & (Of Blessed Memory)
 Gary Fromson Family
 Terry & Allan Goldberg Family
 Cathy & Larry Goldberg Family
 Judy & David Kaufman
 Elayne & Robert Kwait
 Sharon & James Lebovitz
 Barbara & Abraham Miller
 Sydell Miller
 Harriet & Mel Morris
 Adriana & Andrew Randall
 Audrey & Albert Ratner
 Ilana & Charles Horowitz Ratner
 Susan & James Ratner
 Deborah & Ronald Ratner
 Leighton A. Rosenthal Family
 Leonard Senkfor*
 Lauren & Steven J. Spilman
 Marilyn & (Of Blessed Memory) Robert Stein

David Society Members

Marla & David Berns
 Barbara & Bob Brenner
 Grace & Michael Drusinsky
 Sharon & Bruce Epstein
 Marcy & Dennis Fisher
 Phyllis & Avrum Froimson
 Rebecca & David Heller
 Deborah & Edward Meckler
 Loree & Steven Potash
 Aliko & Peter Rzepka
 Anita & Michael Siegal
 Marcy Schwartz & Daniel Simon Family
 Audrey & David Sylvan
 Hallie & Jeffrey Wasserman Family
 Judy & Steven Willensky
 Ellen & Daniel Zelman

Solomon Society members will be acknowledged in the December Bulletin.

* Addition to last published list



Family Fun Night with the Cavs

Enjoy a night out during school winter break and watch the Cleveland Cavaliers take on the Golden State Warriors!

Sunday, December 29 • Quicken Loans Arena

4:30 pm doors open for pictures with the mascot and kids' activities • **6:00 pm** game starts

Tickets are \$24 each (section 221) and can be ordered on the Men's Club website, **parkmensclub.org**, or by mailing a check (payable to **Park Men's Club**) to: **Danny Silverstein, 9441 Pam Court, Twinsburg OH 44087.**

Tickets must be ordered by **Friday, November 22nd.** Include # of tickets, address, phone and email. **You MUST provide an email** in order to receive your tickets via Flash Seats. The Cavs no longer issues paper tickets. To see how Flash Seats work, check here: **cavs.flashseats.com**

Sponsored by the Park Synagogue Men's Club and New Generation

RSVP NOW

OPPORTUNITIES TO GET INVOLVED HELP WANTED

Operation Warm-up!

BRING WARMTH, COMFORT AND KINDNESS TO THOSE IN NEED

Please donate the following items that will be distributed to Jewish families undergoing financial distress, as well as to homeless men, women and children during Cleveland's Homeless Stand-down in January:

**NEW & GENTLY-USED:
INFANT AND CHILDREN'S CLOTHING AND COATS**

NEW FOR MEN, WOMEN & CHILDREN:

**PRE-PACKAGED SOCKS & UNDERWEAR - WASH CLOTHS - TOWELS
INSULATED WINTER HATS, SCARVES & GLOVES**

Look for donations bins at both Park buildings. **Deadline for donating is December 13th.**

If you prefer to give a monetary donation, please send a check (payable to **Park Synagogue** marked for Operation Warm-up in the memo line). Checks can be sent to **Operation Warm-up, Park Synagogue, 27500 Shaker Blvd., Pepper Pike, OH 44124.**

Questions? Contact **Ellen Petler** at epetler@parksyn.org or (216) 371-2244, ext. 122.

SAVE THE DATE FOR THE MEN'S CLUB

**EARL STOVSKY MEMORIAL
MINYANNAIRE OF THE YEAR**

SUNDAY, DECEMBER 15

8:30 am • Park Synagogue East

Youth Group

NEWS & EVENTS

Park Preschool Corner



JR. KADIMA grades 3-5 Chanukah Bash

RSVP NOW

Sunday, November 10 • 12:00 - 2:00 pm • PSE Men's Club Boardroom

Come join us for lunch, play Chanukah games and paint pottery (to give as a gift or keep for yourself)! Be sure to bring a friend! RSVP to Jr. Kadima advisor, **Darla Gross**, at darla2523@aol.com.

KADIMA grades 6-8

RSVP NOW

Pizza & Pottery

Sunday, Nov. 10 • 12:00 - 2:00 pm • PSE Youth Lounge

Join us for lunch, play Chanukah games and paint pottery (to give as a gift or keep for yourself)! Be sure to bring a friend! RSVP to Kadima advisor, **Sara Yurman**, at sarajoynt@gmail.com.

USY grades 9-12

RSVP NOW

Lounge Night

Sunday, Nov. 3 • 5:00 - 7:00 pm • PSE Youth Lounge

Come hang out with USY!

CRUSY Fall Kinnus

Friday, Nov. 15 – Sunday, Nov. 17 • Pittsburgh, PA

Don't miss Fall Kinnus. Sign up today for a fun weekend and meet new friends!!

Questions? Email Mathew Barkan at mathew.barkan@case.edu.

Park Preschool
wish list

Call us if you have outgrown any of these items that we could use! **Thanks!**
(216) 371-2244, ext. 203

Yoga mats • Rocking chairs (in good condition)
Small riding toys for 18-24 month olds

A Time for Reflection

The Jewish New Year is a time for reflection and to set goals for self-improvement. Here at Park Preschool, the staff is taking steps toward professional development. In concert with the Jewish Education Center of Cleveland, I have arranged for our teachers to participate in a month-long "In-Service Class" about brain development in early childhood, presented by a well-known expert in the field. This will help upgrade our excellent curriculum, which already complies with the high standards of the state's "Step Up To Quality" program requirements. What we glean from this course will help enhance our curriculum, and reflect the most updated research on teaching children of this age. I am also excited to be presenting a parallel Judaic component to this course that links our tradition's views of young children's education. We are committed to growing and developing as a staff, right along with the children's growth and development.

As of this month, we have started our Enrichment Classes in such diverse areas as "Hip Hop Dance," "Happy Feet Soccer," "My Gym" and "Little Scientists." The children are really enjoying the activities!



Little Scientists decorating carbon atoms

Please contact us about our weekly "**Moms & Babies at the Park**" every Friday from 10:00 to 11:00 am, our new "**Mom & Me**" separation class, and our monthly "**Women's Spirituality & Jewish Values**" discussion group (next class is **Wednesday, November 13th from 9:30 to 10:30 am**), which is open to all women in the community.

RSVP NOW

Yours For Children,
Anne Sportas, Director

Fun for babies at Park Preschool

We have two "classes" that provide lots of fun for babies (and caregivers) at Park Preschool!
Contact us at (216) 371-2244, ext. 203 or asportas@parksyn.org to enroll today!

Moms & Babies at the Park

Thursdays • 10:00-11:00 am • Free •
RSVP required • 3 - 18 months old

Meet other Moms and enjoy music and movement with Kathy Fromson.

RSVP NOW

Mom & Me Separation Class

One or two days/week option
9:45 - 11:15 am • RSVP required • 18 - 24 months old

This class introduces young children gently and gradually to preschool.

NEW!



Family Education and Wolf Religious School

Wolf Religious School is a **Framework of Excellence** school

School Calendar At-a-Glance

- Fri., Nov. 1:** Confirmation Shabbaton
- Sat., Nov. 2:** Youth Service • 10:30 am • PSM
Confirmation Shabbaton
- Sun., Nov. 3:** Daylight Savings ends - "fall back one hour"
Sunday School • 9:15 am • PSE
- Mon., Nov. 4:** Weekday Hebrew School 4:00 pm • PSE
- Wed., Nov. 6:** 8/9 Grade • 6:00 pm • PSE
- Thurs., Nov. 7:** All-Star Thursday 4:00 pm • PSE
- Fri., Nov. 8:** Klezmer Family Service • 6:00 pm • PSE
- Sat., Nov. 9:** Youth Service • 10:30 am • PSM
Confirmation class • 9:30 am • PSM
Family Havdalah Program • 5:00 pm • Shaker Lakes Nature Center
- Sun., Nov. 10:** Sunday School • 9:15 am • PSE
Dreidel Shop • 9:15 am - 12:30 pm • PSE
- Mon., Nov. 11:** Weekday Hebrew School • 4:00 pm • PSE
11/12th Grade Class • 7:00 pm • PSE
Dreidel Shop • 3:30 - 6:15 pm • PSE
- Wed., Nov. 13:** 8/9 Grade • 6:00 pm • Maltz Museum
- Thurs., Nov. 14:** All-Star Thursday • 4:00 pm • PSE
- Sat., Nov. 16:** Family Ruach Service • 10:30 am • PSM
Confirmation class & lunch
10:30 am • PSM
- Sun., Nov. 17:** Sunday School • 9:15 am • PSE
- Mon., Nov. 18:** Weekday Hebrew School • 4:00 pm • PSE
- Wed., Nov. 20:** 8/9 Grade • 6:00 pm • PSE
- Thurs., Nov. 21:** All-Star Thursday • 4:00 pm • PSE
- Sat., Nov. 23:** Youth Service 10:30 am • PSM
Confirmation class • 9:30 am • PSM
- Sun., Nov. 24:** Sunday School • 9:15 am • PSE
- Mon., Nov. 25 - Thursday, Nov. 28:** NO SCHOOL • Thanksgiving break
- Fri., Nov. 29:** Chanukah Family Shabbat
6:00 pm • PSE
- Sat., Nov. 30:** Youth Service • 10:30 am • PSM



The Park Synagogue Wolf Religious School invites you to

A Magical Family Havdalah

Saturday, November 9 • 5:00-7:00 pm

Nature Center at Shaker Lakes

2600 South Park Boulevard

Watch the sunset and take part in the mitzvah of havdalah with your family and friends. Enjoy dinner, s'mores, a magic show featuring Rick Smith Jr., and celebrate the transition from Shabbat to a new week with havdalah.

RSVP NOW

This is a free event, but **RSVP's are required by November 1st**. RSVP to Executive Educator, **Shani Kadis**, at skadis@parksyn.org with the number of adults and children attending, names and ages of children, and any dietary restrictions. If you have any questions, please call Shani at (216) 371-2244, ext. 165.



Collecting Shoes for Soles4Souls

The Wolf Religious School, Park Preschool and New Generation are joining together to help make the Soles4Souls shoe drive their best yet!

Drop off any type of shoes, just as long as they are new or gently worn. There is a donation bin located at **Park Synagogue East** and we are collecting shoes until **November 15. ** Please rubber band each pair together before donating! ****



Shabbat Clubhouse

For toddlers through 1st graders

**Join us Shabbat and Holiday Mornings
9:45 am – 12:00 noon • Shabbat Clubhouse • PSM**

Bring your children to the Shabbat Clubhouse located in the School Wing, then attend Shabbat Morning Services in the Main Sanctuary. Children will be escorted to the Sanctuary Foyer to meet you for "Ein Keloheynu."



WOMEN'S ROSH CHODESH GROUP

Park women of all ages are invited to our monthly

Mahj & Bridge Mingle

Tuesdays, November 5 • December 3 • January 7
6:45-9:00 pm • Park Synagogue East

Fun for ALL levels of experience! **\$5.00 donation** to Park's Nashim Education Fund for Women



Now on
Tuesdays!

Open to all Park
members and
their guests.



New! Bridge groups welcome! Please RSVP to Adele.



You must bring your own mahj rules and mahj set, if you own one. Please let us know: if you need **instruction** (by experienced players); if you are coming with a **group**; and/or if you would like to **teach**.

RSVP to: Adele Sheftel at asheftel@parksyn.org or (216) 371-2244, ext. 161.

Questions? Contact **Kandi Friedman** at (216) 292-3161 or kandika15@aol.com.

RSVP NOW

Order your new 2014 Mahj cards today!

Park member, **Illene Rosewater**, is now taking orders for new Mahj rule cards.

Regular print cards are \$8.00 each

Large print cards are \$9.00 each

Cost includes mailing to your home. Orders must be received by January 21, 2014. Please indicate number and type of cards requested, the address for mailing, and enclose a check (**made out to Hadassah**)

and mail to:

**Illene Rosewater, 1839 Euston Drive
Mayfield Heights, OH 44124**

Women's Rosh Chodesh Book Group

Wednesday • December 11 • 7:30 pm

Park women are invited to join the discussion of

Ireland by Frank Delaney.

at the home of **Lee Apple**
19191 Fairmount Blvd., Shaker Heights (west of Warrensville on the north side of the street)

Please **RSVP to Lee** at apple19191@aol.com or (216) 321-1007.



Next book group meeting is **February 5** with a discussion of ***A Thread of Grace*** by Mary Doria Russell.

Co-Chairs are **Mary Chaitoff** and **Fran Schlechter**.

SAVE THE DATE FOR WRCG & SISTERHOOD'S

WOMEN'S SHABBAT / SCHOLAR-IN-RESIDENCE

featuring **Dr. Amy Kalmanofsky**,
Assistant Professor of Bible at the Jewish
Theological Seminary

JANUARY 24 & 25

If you would like an English or Hebrew part in the morning service, please contact **Adele Sheftel**, Rabbi Marcus' assistant, at asheftel@parksyn.org or (216) 371-2244, ext. 161.

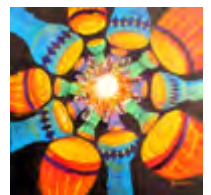


SAVE THE DATE FOR WRCG'S

DRUM CIRCLE

**TUESDAY
DECEMBER 10**

**7:30 pm
Park Synagogue East**



SIMAN TOV U'MAZEL TOV **B'NEI MITZVAH**

Armon Gabriel Frey *November 2*



Armon attends Brady Middle School where he enjoys playing on the school's basketball, football and baseball teams. He also plays clarinet in the school band and enjoys socializing with friends. For his mitzvah project, Armon is collecting food and volunteering for the Cleveland Foodbank. His parents are Davinna Cohen-Frey & Mark Frey; his brothers are

Elijah, Benjamin, Jonah and Adin.

Elijah Seth Frey *November 2*



Elijah attends Brady Middle School where he plays violin in the school orchestra. In his spare time, Elijah enjoys skateboarding, playing sports, cars, music, drawing and playing the guitar. Elijah is volunteering at Montefiore for his mitzvah project. His parents are Davinna Cohen-Frey & Mark Frey; his brothers are Armon, Benjamin, Jonah and Adin.

Benjamin Cole Pearlstein *November 2, Mincha*



Benjamin attends Kenston Middle School, enjoys competitive swimming (holds a pool record), playing baseball (all-star catcher), and has a love for all animals. His father is Rick Pearlstein, his mother and stepfather are Lori & Fred Shafer, and his siblings are Braden and Rebecca.

Malka Elyse Steinberg *November 9*



Malka attends Shaker Heights Middle School where she plays cornet in the band. In her free time, Malka plays lacrosse, tennis and basketball. She also enjoys reading, riding roller coasters, baking and volunteering at the Cleveland Foodbank. Since she likes fashion, Malka is collecting clothing to donate for her mitzvah project. Parents

are Doreen Abdullofski & Brad Steinberg, and her brother is Elijah.

Bryan Alfonso Shein *November 16*



Bryan attends Brady Middle School where he competed in cross country this fall and plays baseball. He also participates in the school band.

Mason Mellitz Shein *November 16*



Mason attends Brady Middle School and enjoys playing baseball and soccer.

Mia Paige Shein *November 16*



Mia attends Hathaway Brown School where she serves on the Student Council and competes in the Interscholastic Equestrian Association.

All three Shein siblings are raising money for the Bar/Bat Mitzvah Twinning Program through the Jewish Foundation for the Righteous, an organization that provides financial assistance to more than 600 non-Jews who rescued Jews during the Holocaust and preserves their legacy through a national education program. Bryan, Mason and Mia's parents are Stefanie & Alan Shein.

Carly Meredith Stewart *November 23*



Carly attends The Agnon School where she is on the basketball team and plays saxophone in the band. In her free time, Carly plays piano, reads and enjoys creative writing. For her mitzvah project, she is purchasing and packing night time bags for Project Night-Night, an organization that provides comfort items to homeless children. Carly's parents are

Rachael & Ralph Stewart, brother is Adam, and sister is Talia.

Max Elliott Leikin *November 30*



Max attends Brady Middle School and loves playing baseball and basketball. For his mitzvah project, Max is volunteering at The Friendship Circle and also donating a portion of his gifts to them. His parents are Tracey & Jeffrey Leikin and his siblings are Jared and Lindy.

Sydney Erin Leikin *November 30*



Sydney attends Beachwood Middle School where she is a cheerleader, plays viola in the orchestra and is a member of SADD. In her spare time, she enjoys the piano and playing with her dog, Charlie. For her mitzvah project, Sydney is volunteering at The Friendship Circle and also donating a portion of her gifts to them. Parents are Pam & Jim Leikin

and her brothers are Chad and Brett.

Sunday

Monday

Tuesday

Wednesday

Thursday

Friday

Saturday

November Heshvan / =islev



Find us on Facebook

www.facebook.com/parksyn

PSM: Park Synagogue Main
 PSE: Park Synagogue East
 PPS: Park Preschool
 PSA: Park Senior Adults
 WRCG: Women's Rosh Chodesh Group
 FMM: Family Mitzvah Makers
 JMM: Junior Mitzvah Makers
 YM: Young Menches, *Powered by Park*
 MC: Men's Club

Morning Minyan 1
 7:30 am • PSE

Confirmation Shabbaton (through Saturday)

Family Shabbat Service
Hot & Hearty Oneg
 6:00 pm • PSE

Candle lighting
 6:03 pm

Shabbat Morning Service 2
 9:00 am • PSM

B'nei Mitzvah:
Armon Frey
Elijah Frey
Anniversary Shabbat

Shabbat Clubhouse
Youth Service
Evening Service
 5:00 pm • PSM

Mincha Bar Mitzvah:
Benjamin Pearlstein

Daylight Savings Ends - fall back 3

Morning Minyan
 8:30 am • PSE

Sunday School
 9:15 am • PSE

Speakers' Series: College Planning
 9:30 am • PSE

Talmud Study Class
 9:30 am • PSE

Rabbi's Bible Class
 11:00 am • PSE

Evening Minyan
 5:30 pm • PSE

Adrienne & Harvey Siegel Tribute
 7:00 pm • PSE

Morning Minyan 4
 7:30 am • PSE

Sisterhood Book Group
 10:15 am • PSE

Weekday School
 4:00 pm • PSE

Evening Minyan
 6:00 pm • PSE

Election Day 5

Morning Minyan
 7:30 am • PSE

Sisterhood
 10:00 am • PSE

Evening Minyan
 6:00 pm • PSE

Mahj & Bridge Mingle
 6:45 pm • PSE

Morning Minyan 6
 7:30 am • PSE

3 Kislev

8/9 Grade Class
 6:00 pm • PSE

Evening Minyan
 6:00 pm • PSE

Morning Minyan 7
 7:30 am • PSE

All Star Thursday
 4:00 pm • PSE

Hebrew II
 5:30 pm • PSE

Evening Minyan
 6:00 pm • PSE

Morning Minyan 8
 7:30 am • PSE

Family Shabbat Service with Klezmer Band
 6:00 pm • PSE

Candle lighting
 4:55 pm

Shabbat Morning Service 9
 9:00 am • PSM

Bat Mitzvah:
Malka Steinberg

Shabbat Clubhouse
Youth Service
Confirmation Class

Evening Service
 4:30 pm • PSM

Family Havdalah Program
 5:00 pm • Away

Morning Minyan 10
 8:30 am • PSE

Dreidel Shop
 9:15 am - 12:30 • PSE

Sunday School
 9:15 am • PSE

Speakers' Series: World Economy
 9:30 am • PSE

Talmud Study Class
 9:30 am • PSE

Rabbi's Bible Class
 11:00 am • PSE

PSA: Blue Skies
 3:30 pm • PSE

Evening Minyan
 5:30 pm • PSE

Morning Minyan 11
 7:30 am • PSE

Dreidel Shop
 3:30 - 6:15 pm • PSE

Weekday School
 4:00 pm • PSE

Evening Minyan
 6:00 pm • PSE

11/12 Grade Seminar
 7:00 pm • PSE

Morning Minyan 12
 7:30 am • PSE

Sisterhood
 10:00 am • PSE

Evening Minyan
 6:00 pm • PSE

Chanukah Cuisine
 6:30 pm • PSE

Morning Minyan 13
 7:30 am • PSE

Women's Spirituality Class
 9:15 am • PSE

10 Kislev

8/9 Grade Class
 6:00 pm • Away

Evening Minyan
 6:00 pm • PSE

Morning Minyan 14
 7:30 am • PSE

PPS Moms & Babies
 1:00 am • PSE

All Star Thursday
 4:00 pm • PSE

Hebrew II
 5:30 pm • PSE

Evening Minyan
 6:00 pm • PSE

Morning Minyan 15
 7:30 am • PSE

Family Shabbat Service with Volunteer Choir
 6:00 pm • PSE

Scholar-in-Residence event
 7:00 pm • Away

Candle lighting
 4:49 pm

Shabbat Morning Service with Scholar in Residence 16
 9:00 am • PSM

B'nei Mitzvah:
Bryan, Mason and Mia Shein

Birthday Shabbat
Shabbat Clubhouse
Confirmation & lunch
Family Ruach Service
 10:30 am • Parlors

Scholar-in-Residence Lunch & Learn
 12:30 pm • PSM

Evening Service
 4:30 pm • PSM

Morning Minyan 17
 8:30 am • PSE

Sunday School
 9:15 am • PSE

Speakers' Series: Retirement
 9:30 am • PSE

Talmud Study Class
 9:30 am • PSE

Rabbi's Bible Class
 11:00 am • PSE

Scholar-in-Residence events
 9:00 am • 1:00 pm • 4:00 pm • all away

Evening Minyan
 5:30 pm • PSE

Morning Minyan 18
 7:30 am • PSE

Weekday School
 4:00 pm • PSE

Evening Minyan
 6:00 pm • PSE

Affordable Care Act Program
 7:30 pm • PSE

Morning Minyan 19
 7:30 am • PSE

Sisterhood
 10:00 am • PSE

Evening Minyan
 6:00 pm • PSE

Morning Minyan 20
 7:30 am • PSE

17 Kislev

8/9 Grade Class
 6:00 pm • PSE

Evening Minyan
 6:00 pm • PSE

Morning Minyan 21
 7:30 am • PSE

All Star Thursday
 4:00 pm • PSE

Hebrew II
 5:30 pm • PSE

Evening Minyan
 6:00 pm • PSE

Morning Minyan 22
 7:30 am • PSE

Family Shabbat Service
 6:00 pm • PSE

Candle lighting
 4:44 pm

Shabbat Morning Service 23
 9:00 am • PSM

Bat Mitzvah:
Carly Stewart

Newborn Shabbat
Shabbat Clubhouse
Youth Service
Confirmation Class

Evening Service
 4:30 pm • PSM

Morning Minyan 24
 8:30 am • PSE

Sunday School
 9:15 am • PSE

NO Talmud Study

Rabbi's Bible Class
 11:00 am • PSE

Evening Minyan
 5:30 pm • PSE

Morning Minyan 25
 7:30 am • PSE

NO Weekday School

Evening Minyan
 6:00 pm • PSE

Morning Minyan 26
 7:30 am • PSE

NO Sisterhood

Evening Minyan
 6:00 pm • PSE

Erev Chanukah 27

Morning Minyan
 7:30 am • PSE

24 Kislev

Evening Minyan
 6:00 pm • PSE

Chanukah 1 Thanksgiving offices/schools closed 28

Morning Minyan
 8:30 am • PSE

NO All Star Thursday
NO Hebrew II

Evening Minyan
 4:00 pm • PSE

Chanukah 2 Morning Minyan 29
 7:30 am • PSE

offices/schools closed

Chanukah Family Shabbat Service and Hot & Hearty
 6:00 pm • PSE

Candle lighting
 4:40 pm

Chanukah 3 Shabbat Morning Service 30
 9:00 am • PSM

B'nei Mitzvah:
Max Leikin
Sydney Leikin

Shabbat Clubhouse
Youth Service
Evening Service
 4:30 pm • PSM

Sukkah Decorating Thank You's



Thanks to everyone who helped make the **PARK SYNAGOGUE EAST SUKKAH** look so beautiful! We thank **Lauren & Steve Spilman** for their annual sponsorship of the assembling and decorating of the beautiful wooden sukkah that they had made especially for the Park Synagogue East patio.

The Park Family Mitzvah Makers, co-chaired by **Debbie Greenberg** and **Brenda Loewenthal** (pictured at left), and Park's Keruv Connection co-

sponsored the annual sukkah decorating.

Todah rabbah to the following volunteers who helped string colorful vegetables and beads and make Sukkot drawings to hang in the sukkah:

Stacy Bauer; Marla, David, Lyla, Kaleb and Fiona Berns; Ari, Michelle & Martin Bluestein; Rebecca Boxer and Zoe Allen; Stacey, David, Anna, Josh and Sophia Buchner; Lila Chaikin; Linda Chapman; David & Trudie Effron; Lisa, Joshua and Kaylee Friedlander; Patsy, Steve and Maxwell Goodman; Debbie, Brian, Benjamin and Nathan Greenberg; Marlene, Roger and Arielle Klein; Jill, Zoe and Abby Lipman; Brenda, Bill, Amanda and Reva Loewenthal; Becky, Rob, Faith, Giovanni and Eliana Maglionico; Abigail and Rafi Silverman; and Max, Lauren & Steve Spilman.



THANKS TO PARK MAIN SUKKAH DECORATORS

Our thanks go to the following people who helped to create the beautiful Park Main Sukkah this year: **Adele Ack, Sandra Baumal, Beverly Bedol, Betty Bloomfield,**

Karen Brown, Ina Burday, Judy Cohen, Scott Cohen, Nathaniel Confino, Beverly Davis, Mona Effron, Judy Feingold, Kandi Friedman, Gloria Goldstein, Jeremy Gutow, Edie Hauptman, Lesley Hirsh, Sheila Arnoff Hirsch, Arlyne Hoffman, Charlotte Kaminsky, Marcia Korenstein, Shirley Kreske, Florence Lander, Jerry Lander, Carol Leibow, Valerie Levinsohn, David Munitz, Harriet Roth, Lillian Rubin, Rhoda Shapiro, Faye Strassman, Nancy Simon, Mina Saidel, Gerry Powers Volper, Jerry Wachs, Phyllis Wachs, Ieda Warshay, Don Weinstein, Donna Weinstein, and Rita Weintraub.



Our special thanks to our dedicated Park custodial and kitchen staff, whose invaluable help makes this sukkah more beautiful each year!

Thank you all!

Lesley Hirsh and Beverly Davis
Sisterhood Sukkah Co-Chairs

See more pictures under "events" at parksyn.org (follow the link to our temporary website).



GREATER CLEVELAND CONGREGATIONS UPDATE

Member congregations of GCC, including Park Synagogue, are currently engaged in three important areas of community organizing. **We would love to have your involvement and support.** To work on any of these issues, please contact **Susan Reis**, Park's GCC Chair, at sixreis@gmail.com.

EDUCATION:

Our Children Are Not For Sale

Eighteen months ago, GCC decided to support the Cleveland Metropolitan School District's Transformational Plan. Unfortunately some for-profit charter schools—that quickly open, use predatory practices to recruit students and take state education money—have come upon the scene. One of these schools, East Preparatory Academy, could undermine the children at Case Elementary School, a GCC Investment School. The GCC is partnering with parents to challenge these predatory practices and to strengthen the existing CMSD schools. Please see www.cleveland.com/metro/index.ssf/2013/10/charter_school_recruiting_gimm.html for more information.

CRIMINAL JUSTICE:

Do Not Stand Idly By is the GCC's current action to reduce gun violence. We are meeting with mayors and police chiefs to encourage them to use their collective buying power to urge gun manufacturers to create safer guns. We provide training and partnering with experienced GCC leaders for anyone interested in helping this effort.

HEALTH CARE:

Even though Governor Kasich is trying to include Medicaid Expansion as a part of Ohio's healthcare options, GCC members are keeping the pressure on Ohio state legislators. We are looking for volunteers to help gather signatures for a petition campaign to get Medicaid Expansion on the ballot in 2014 if Kasich's efforts fail.

Milestone Anniversaries

November 2013

Join us for Anniversary Shabbat on Saturday, November 2

10 Years

Jill & Kevin Lipman
Rachel & Michael Levinson

15 Years

Tracey & Jeff Leikin
Mindy & Michael Axner

25 Years

Stacy & Bruce Friedman
Janice & Rick Schwartz

30 Years

Lee & George Roller
Laura & Larry Friedman
Charlene & Bruce Chelnick
Sharon & Jamie Lebovitz

55 Years

Gail & Al Abrams

56 Years

Doris & Bernard
Boxerbaum

57 Years

Nadezhda Aksentseva &
Izrail Sorotskin

62 Years

Renee & Conrad
Morgenstern
Renee & Bernard Miller

64 Years

Judith & Phillip Dratler

72 Years

Ruth & Myron Solwitz

Shabbat Parshiot

Torah portions to be read during the month.

November 2 / 29 Heshvan

Toldot
Genesis 25:19 - 28:9
1 Samuel 20:18-42

November 9 / 6 Kislev

Vayetze
Genesis 28:10 - 32:3
Hosea 12:13 - 14:10

November 16 / 13 Kislev

Vayishlah
Genesis 32:4 - 36:43
Obadiah 1:1-21

November 23 / 20 Kislev

Vayeshev
Genesis 37:1 - 40:23
Amos 2:6 - 3:8

November 30 / 27 Kislev

Miketz
Genesis 41:1 - 44:17
Numbers 7:24-29
Zehariah 2:14 - 4:7

The Sisterhood Gift Shop is your Chanukah Headquarters

Call **Norma Barron** at
(216) 378-9072 or
Sheila Arnoff Hirsch
at (216) 509-0508
to browse today!



The Congregation Expresses its Sympathy to our Members:

Shelley Fishbach on the loss of her father, and **Rebecca Fishbach** on the loss of her grandfather, **Mickey Goldstein**.

Mikki Rocker on the loss of her mother, **Ada Eigen**.

Marcia Kline on the loss of her brother, and **Cathy Schreiber** on the loss of her uncle, **Stuart Miller**.

Annette Kleinman Markell on the loss of her sister, **Florence Goetz**.

Elaine Miller on the loss of her husband, **Philip Miller**.

Alan Malkin on the loss of his sister, **Elaine Lapine**.

Susan Weingold on the loss of her sister, **Rita Weiner**.

Miriam Avner on the loss of her daughter-in-law; **Carole Israel** on the loss of her sister-in-law; **Michael Avner** on the loss of his wife; and **Chris** on the loss of his mother, **Christine Avner**.

Barry Cohn on the loss of his father, and **Jason** and **Jennifer** on the loss of their grandfather, **Bob Cohn**.

Jonathan Jaffe on the loss of his mother, and **Rachel** and **Joshua** on the loss of their grandmother, **Charlotte "Sherry" Jaffe**.

Maria "Etti" Kantarovich on the loss of her husband, **Carlos Kantarovich**.

Renee Garson Hochman, **Stuart Garson** and **Nancy Garson-Angert** on the loss of their mother; **Nancy Schlachet** on the loss of her mother-in-law; **Darci Friedman** on the loss of her grandmother; and **Sam** and **Ari** on the loss of their great grandmother, **Esther Garson**.

Mark Feingold on the loss of his mother, and **Alisa Feingold** on the loss of her grandmother, **Sara Pollak**.

Harriet Morris and **Sanford Weinberg** on the loss of their father; **Scott Morris**, **Alison Tannenbaum** and **Kenneth Weinberg** on the loss of their grandfather; and **Matthew**, **Lindsay**, **Jami**, **Noah** and **Jake** on the loss of their great grandfather, **Herman Weinberg**.

In Memoriam נחמו נחמו עמי

Esther Garson

Carlos Kantarovich

Philip Miller

Herman Weinberg

ADULT EDUCATION

"Wisdom is not a product of schooling but of the lifelong attempt to acquire it." ~Albert Einstein

Projects of the Dr. Erwin Levin Adult Study Fund

Rabbi's Bible Class

Sundays, Park Synagogue East

11:00 am–12:00 noon (Room 147)

NOVEMBER 3 • 10 • 17 • 24

Learn with Rabbi Skoff in this class that is open to all and accessible at all levels! No pre-registration necessary.

Talmud Study Group

Sundays, Park Synagogue East

9:30–10:30 am (Room 249)

NOVEMBER 3 • 10 • 17

Learn more about the Talmud with instructor, Rabbi Tzvi Urkowitz. No pre-registration necessary.

Hebrew Level I

If you are interested in learning prayerbook Hebrew with **Judy Eigenfeld**, please email Eva at eva@parksyn.org and **indicate the evening you would prefer to have class**. We will be setting a new class schedule based on those interested.

Hebrew Level II

Thursdays, Park Synagogue East

5:30–7:00 pm

NOVEMBER 7 • 14 • 21

Reading fluency and enjoyment with Valerie Levinsohn. Beginners welcome!

Register with Valerie at valrgal@aol.com

RSVP NOW

Peace at Home: Mission Impossible?

Sundays, Park Synagogue East

9:30–10:30 am

Join **Ilana Horowitz Ratner**, our Jewish Life Educator, in the continuing series of "Peace at Home: Mission Impossible?"

DECEMBER 8: Really? 'Til death do us part?

DECEMBER 15: Friends and Family: Do the same Rules Apply?

Study sessions are open to all and no pre-registration is necessary.

Gifts to Funds

August 29 - October 6, 2013

Alvin Resnick Bible Study Fund

IMO Jeannette Weintraub by Gloria Resnick

Amelia & Harry Halpert Library Plaque Fund

IMO Harry Halpert by Frances Feldman

Ann & Marc Freimuth Discover Judaism Fund

IHO Chuck & Carole Faiman's 50th anniversary by Marc & Ann Freimuth

Arlene Munitz Memorial Consecration Fund

IHO the birth of Seth & Sheri Eisengart's granddaughter, Sonia, by Larry & Linda Rich

IMO Reverend Eli Levy by Jodi Rich & Jonathan Eisengart

IMO Herschel Koblenz; IMO Henry Rich; and IMO Reverend Eli Levy by Larry & Linda Rich

Barbara & Bob Brenner Toddler Time Fund

IHO Bob Brenner's birthday by Carolyn & Ed Gabelman

IHO the birth of Grayson Maxwell King by Bob & Barbara Brenner, and Jeffrey & Jill Muencz

IHO Jennifer Stovsky's Bat Mitzvah by Bob & Barbara Brenner, and Jeffrey & Jill Muencz

IHO Carol & Stu Collins' anniversary by Jeffrey & Jill Muencz

IMO Reverend Eli Levy by Bob & Barbara Brenner, and Jeffrey & Jill Muencz

IMO Marcia Yasinow by Bob & Barbara Brenner

IMO Esther Isakov by Jeffrey & Jill Muencz

IMO Ronald Berebitsky by Jeffrey & Jill Muencz

Barney Garson Minyan Fund

In appreciation of Scott Cohen; In appreciation of Roger Kramer; In appreciation of Ken Vinocur; and In appreciation of Dan Zuckerman by Loree Potash

IHO our Aliyah on Rosh Hashana by Melvin & Susan Schwarzwald

IMO Celia Rubin; and IMO Annie Lipkowitz by Lillian Rubin

IMO Marcia Yasinow by Loree Potash

Barry Garson Memorial Fund

IMO Barry Garson by Esther Garson and Renee & Steve Hochman

Belle & Morris Boxerbaum Library Plaque Fund

IMO Morris Boxerbaum by Ina Burday

Bernard & Marjorie Loewenthal Educational Fund

IMO Reverend Eli Levy; and IMO Dr. Alan Glick by Marjorie Loewenthal

Bess & Maury Feren Humanitarian Fund

IHO Maury Feren's birthday by Barbara, Darrell & Steven Kaback

IMO Isadore Nagelbush by Maury Feren

Bresky Family Special Needs Fund

IMO Louis Berkman by Norman & Toby Bresky

Cheryl Ann Friedman Shabbat Club Fund

In appreciation of Joni Klaus by Allen, Kandi & Ralph Friedman

IMO Reverend Eli Levy by Allen & Kandi Friedman

Diamond Rosen Garden Fund

IMO Michael Diamond; and IMO Matilda Rosen by Harlan Diamond

Dr. Alex Rubins Library Plaque Fund

IMO Brett Rubins; IMO Blanche Glickman by Betty Rubins

Dr. Gilbert N. Silbiger Mitzvah Day Fund

Wishing Jared Friedman a Refuah Shlemah by Cheryl & Danny Kretch

IHO Hadas Galili's Bat Mitzvah by Danny & Cheryl Kretch, and Neal & Pam Marks

IMO Reverend Eli Levy by Arlene Silbiger

IMO Milton "Gimp" Fromson by Cheryl & Danny Kretch

IMO Stacy Starkoff by Cheryl Kretch

IMO Rolf Kaufman by Neal & Pam Marks

Dr. Ruth Ratner Miller Humanitarian Fund

In appreciation of Abe & Barb Miller by Jeff & Helen Anspach

Ellerin Landscape & Garden Fund

IMO Reverend Eli Levy by Jerry & Roz Ellerin

Fannie & Sidney Walzer Library Plaque Fund

IMO Shoshana Porath Haas by Laura & Sanford Wallenstein, Dr. Cary & Mary Goldstein, Wendy Zahler and Barry Goldstein

Gifts to Funds

continued

Elyse Eisen Barson Camp Scholarship Fund

In appreciation of Rabbi Skoff by Joel & Gail Eisen
IHO Kayla Stroom's consecration by Joel & Gail Eisen
IHO Dr. Richard Stroom's birthday by Joel & Gail Eisen
IMO Elyse Eisen Barson by Alan & Ronna Treinish,
Carol & Richard Stroom, Esther & Bernie Rutman, Joel
& Gail Eisen, Kara Eisen, and Sandy Bohl
IMO Reverend Eli Levy by Joel & Gail Eisen

Ezra & Tzivia Galili Fund

In appreciation of Gadi Galili by Cory Zucker, Joan
Leeb, and Miriam J. Fried
IHO Hadas Galili's Bat Mitzvah by Bob & Darlene
Duviv, Doris Sopher, Eva & Curt Simpson, Harriet &
Mel Morris, Scott & Dana Morris and family, Jay &
Angela Siegel, Jeff Marks, Jodi & Joel Adelman and
family, Josh & Anne Sportas, Kerry & Renee Chelm, Lita
Weiss, Marty & Mary Jatlow, Michael & Cindy Duber,
Nancy & Sheldon Hartman, Norman & Arlene Golovan,
Rebecca Long, Sandra Baumal, Selig & Faye Strassman,
Susan & Melvin Schwarzwald, Tammy & Matthew
Friedman and family, and the Zuckerman family
IMO Joyce Kaufman; IMO Herschel Koblenz; IMO Ethel
Coppolino; and IMO Marsha Goodman by Tammy &
Matthew Friedman and family

Harry & Terry Adell Memorial Fund for PSWR

IHO the marriage of Amy & Ron Greenspan's son by
Maurice & Mona Senkfor
IMO Lea Schepps by Maurice & Mona Senkfor

Herman & Lois Brown Anniversary Fund

IMO Herman Brown; and IMO Lois Brown by Lawrence
Brown and family

Hunger/Mitzvah Fund

Wishing Nancy Bell a return to good health by Myrna
& Kurt Bloch
In appreciation of our High Holiday honors by Jay &
Angela Siegel
In appreciation of our Aliyah honor by Ronald & Carol
Savrin
In appreciation of Elinor Polster by Sally Good
IHO Hadas Galili's Bat Mitzvah by Alan & Marcia Arons
IHO the birth of Sonia Helene Goldrich; and IHO the
birth of Nava Abigail Waterman by Gary & Ellen Petler
IHO Bat Mitzvah of Arin Mintz by Jan & Terrie
Kleinman
IHO Betty Weintraub's birthday by Marilyn Stein
IMO David I. Kaplan by Amy Kaplan
IMO David Apple; and IMO Rosalind Apple by Chuck
& Lee Apple
IMO Sam Reider by Dee Roth
IMO Ignatz Grossman; and IMO Rose Kleinman by
Ellen Petler
IMO Ellen Koppelman by Isabelle Zuckerman
IMO Reverend Eli Levy; and IMO Marcia Yasinow by
Leonard & Hedy Rabe
IMO Millicent Jatlow by Mary & Martin Jatlow
IMO Marcia Yasinow by Phyllis & Jerry Wachs
IMO Herschel Koblenz by Ruth Zilber

Ida & Dr. Herman Weinberg Fund

IMO Aida Eigen by Mel & Harriet Morris

Jean & Lewis Katz Library Plaque Fund

In appreciation of Selig & Faye Strassman by Debbie,
Ken and Jessica Traeger
IMO David Hirsch by Debbie & Ken Traeger and family

Lilly & Alex Wolovits Library Plaque Fund

IMO Herschel Koblenz by Saul & Linda Ludwig

Louis & Mollie Newman Oneg Shabbat Fund

IMO Florence Goetz by Judith Kramer

Library Program Fund

In appreciation of Park Synagogue by Seymour
Kleinman & Terry Harary
IHO Jeffrey Shapiro's admission to the Canadian Bar
by Sheldon M. & Nan Gisser
IMO Bill Metz by Adrienne Goldberg
IMO Hy Jaye; and IMO Marilyn Mallin by Alan Jaye
IMO Solomon Louis Wine by Alan Wine
IMO Oscar Gilbert by Albert & Audrey Ratner
IMO Manuel Mendelson; and IMO Elaine Shapiro by
Allen & Idele Benjamin
IMO Lois Ross by Amy Ross Pisman
IMO Jennie Rekon by Annabelle Weiss
IMO Israel Herman; and IMO Rose Herman by Barbara
Herman
IMO Jack Bonchek by Barry Bonchek
IMO Hyman Chesler by Barry Chesler
IMO Ida Boxerbaum by Bernard & Doris Boxerbaum
IMO Lillian Cohen; and IMO Jack Benjamin by Bernard
& Sherrie Benjamin
IMO Kenneth Marks by Bernard Marks
IMO Lillian Samuels; and IMO Mitchell Goldstein by
Bernice Goldstein
IMO Willard Miller by Bernie & Linda Friedman
IMO Gerald Arenswald by Bob Turoff & Maxine Leikin
IMO Juanita English by Bonnie Busch
IMO Josef Friedman by Bruce & Rita Mandel
IMO Mildred Cutler by Bruce Cutler
IMO Ida Lewitz by Cathy Randall
IMO Saide D. Rosenthal by Charlotte Kramer
IMO Evelyn Jacobs by Cindy Polster
IMO Marcia Seiger by Daniel Seiger
IMO Alka Apatova by Danil & Sura Goldberg
IMO Lee T. Bernstein by David Bernstein
IMO Sidney Lopate by Dick & Charlene Ratner
IMO Willard Miller by Dr. Sanford & Bonnie Miller
IMO Sylvia Wolf; and IMO Anita Stein by Dr. Sanford
Wolf
IMO Sam Dorris by Ed & Marilyn Ellis
IMO Fanny Herschman by Edie Hauptman
IMO Geraldine Dworkin by Eileen Jacobs
IMO Alex Gould; and IMO Pearl Gould by Eleanor
Schwartz
IMO Albert Goldberger by Erika Marks
IMO Albert Markowitz by Esther Berman
IMO Berko Kazinec by Fanny Jaffe
IMO Martin Davis by Fred & Bonnie Davis
IMO Sol J. Roth by Harriet Roth
IMO Sanford Saul; and IMO Alchonon Zarkey by Hinda
Saul
IMO Goldie Coplon by Isabelle Zuckerman
IMO Virginia Pearlstein by Jack Pearlstein
IMO Lois Kurlander Ross by Jeff Ross
IMO Kenneth Young; and IMO Bill Scher by Jeffrey &
Terry Young
IMO Fred Brodkey by Jerald Brodkey
IMO Irving Herschman by Jerry Herschman
IMO Meyer White by Joseph White
IMO Rita L. Shapiro; and IMO Eva Lubin by Karen
Spector
IMO Samuel Kraus by Ken & Terri Kraus
IMO Kenneth Young by Kevin & Andrea Young
IMO William Solomon by L. Robert & Helen Marks
IMO Helen M. Wolfsohn by Laura Salkin
IMO Freda Robinson by Lois Joan Davis
IMO Ileen Green by Loree Potash
IMO Rafael Bargman by Luzya Bargman
IMO Cyril Reider by Lynn Chesler
IMO Netta Frame by Marc Silverstein
IMO Jacob "Jack" Silverstein by Marc Silverstein

IMO Marvin Hoicowitz by Marcene Baum
IMO Helen Croce; IMO Gertrude Ticktin; IMO Ethel
Neuger; and IMO Anna Odess by Margie Neuger
IMO Stuart Miller by Marilyn & Bob Crow
IMO Meylach Shusterman by Mariya Fuksman
IMO Fannye R. Shafran by Marla & Joseph Shafran
Foundation
IMO Lewis L. Blank by Martin & Sandi Horwitz
IMO Jack J. Levine by Marvin & Sharon Starr
IMO Mary Heller by Maurice Heller
IMO Myron Morris; and IMO Libby Morris by Mel
Morris
IMO Irving Weiner by Mel Weiner
IMO Sol Schwarzwald by Melvin Schwarzwald
IMO Dale Kaufman by Michael Kaufman
IMO Frances Mesuse by Mickey & Claire Eichler
IMO Liza Lernerman; and IMO Miriam Zilberman by
Mikhail Lernerman
IMO Ben Kadish by Mimi Hollander
IMO Dorothy Adell by Mitchell & Janice Adell
IMO Florence Fettman by Morris & Frances Schlechter
IMO Max Meclovsky by Morris Meclovsky
IMO Rachel Aksentsev by Nadezhada Aksentseva
IMO Cathi Wolfson Lazerick by Norma Wolfson
IMO Daniel Dratler by Phillip Dratler
IMO Isadore Rub by Rabbi Milton Rube
IMO Florence Weissman by Renee Lieberman
IMO Mollie Agin by Rhoda & Herbert Agin
IMO Robert Reider by Richard Miller
IMO Felice M. Lichaw by Rick Lichaw
IMO Sydney Goldstein by Robert & Rita Goldstein
IMO Herman Turoff by Robert Turoff
IMO Margulia German by Rubin & Inga Gutarts
IMO Alvin Baumal by Sandra Baumal
IMO Betty Smukler by Sandra Epstein
IMO Jean Rosenblum; and IMO Harry Halpert by
Sanford Halpert
IMO Meer Averbuh by Sarra Vaysman
IMO Sandra P. Lewis by Scott Lewis
IMO Anita Strassman by Selig & Faye Strassman
IMO Nathan Bilfield; IMO Gusty Bilfield; IMO Mildred
Bilfield Terman; and IMO Sidney & Sadie Malin by
Seymour & Elaine Bilfield
IMO Adele & Jack White by Sharon Solomon
IMO Dr. Maurice Lockman by Sheila Herschman
IMO Katie Sherwin by Sol Sherwin
IMO Gavril Eligulashvili by Sophie Zaslavsky
IMO Guillermo Alfonso by Stefanie Shein
IMO Irwin Lashley by Steve & Stacey Shore
IMO Harvey Gottlieb by Steven Gottlieb
IMO Marvin Herzig by Susan Schwarzwald
IMO Myron M. Krinsky by Susan Weingold
IMO Rachel Cherkasky by Susanna Bron
IMO Greta A. Melamed by Tammy & Jeff Rose and
family
IMO Elfreda Tarler by Tena Tarler Rosner
IMO Rose & David Gelb by Terri Kline
IMO Charles Gelb by the Gelb family
IMO Joyce Jennings by the Jennings family
IMO Yakov Khuzin; IMO Isik Khuzin; IMO Elya Khuzina;
IMO Iosif Shnayder; and IMO Many Pojh by the
Khuzin family
IMO Haim Reizes by the Reizes family
IMO Avrum Vaysman; and IMO Maileh Vaysman by
Yelik Vaysman
IMO Sonia Kaaliya by Yelizaveta Polonskaya
IMO Gabriel Shpungin by Youdite Markhasina

Gifts to Funds continued on next page

Gifts to Funds

continued

Jerry Millman Minyan Fund

IHO Jerry Herman's birthday by JoAnn Millman & Sandy Halpert

In appreciation of Park's clergy by the Mintz/Goodman family

IHO Arin Mintz's Bat Mitzvah; and IHO Hadas Galili's Bat Mitzvah by the Mintz/Goodman family
IMO Renee Schecter by JoAnn Millman

Louis & Libby Goldberg Young Adult Resource Fund

IMO Alan J. Cohen by Esther Cohen

IMO Reverend Eli Levy by Mr. & Mrs. Alvin Goldberg and family

Lynn and Barry R. Chesler Educational Endowment Fund

Wishing Lynn & Barry Chesler a Happy New Year by Larry & Cindy Mittman

IHO Hadas Galili's Bat Mitzvah; IHO Emma Briskin's Bat Mitzvah; IHO Jack Newman's Bar Mitzvah; and IHO Bradley Gilbert's Bar Mitzvah by Barry & Lynn Chesler
IHO the birth of Dylan Milton Licker; and IHO the birth of Samuel Joseph Brennan Besser by Barry & Lynn Chesler

IHO Ken Weinberg's engagement by Barry & Lynn Chesler

IHO Diane & Gary Waxman's 30th wedding anniversary by Barry & Lynn Chesler

IMO Reverend Eli Levy by Barry & Lynn Chesler

Maxine & N. Herschel Koblenz Fund

IMO Marion Mazur by Allan Farkas

IMO Herschel Koblenz by Allan & Barbara Peskin, Anclaire Oscar, Anita & Don Fischer, Avrum & Phyllis Froimson, Barbara & Donald Meckler, Bernie & Linda Friedman, Bluie & Kitty Greenberg, Bob & Eileen Blattner, Bonnie & Mike Cole, Bonnie Hughes & Ed Muszynski, Candace Jones, Carl & Paula Shulak, Carolyn & Jim Herman, Clare Shaw, Clifford & Linda Wolf, Dan Abrams & Nan Cohen, David & Anne Hunter, David & Enid Rosenberg, Dennis & Karen Linden, Dick & Charlene Ratner, Edith Berkman, Eileen & Jim Wilkoff, Eric Biel & Dana Rosenfeld, Frederick M. Kaplan, Gloria Resnick, Helen & Herb Braun, Herb & Marilyn Cohen, Herbert Weinberg, Howard & Marilyn Marwill, Irving & Enid Kushner, Jean & Louis Bloomfield, Jeff Marks, Joan Wittenberg, Joel & Deborah Glass, Judith Lichtig, Julius & Charlotte Rubin, Karen & Leonard Steiger, Keith & Nancy Libman, Lesley & Marvin Karp, Lita Weiss, Lora Sanberg, Marc & Ann Freimuth, Marc Silverstein, Marilyn Stein, Marla & Joseph Shafran Foundation, Marvin & Ieda Warshay, Maurice & Mona Senkfor, Mel & Harriet Morris, Merle & Shelia Frankel, Morry & Fran Heller, Morton & Marcia Stone, Mr. & Mrs. Ralph Layton, Muriel & David Nachman, Myrna & Kurt Bloch, Myrna & Tom Dettelbach; Nancy, Pamela & Larry Kekst; Naomi & Ed Singer, Norman & Toby Bresky, Pat & Barry Solomon, Phyllis Smith, Richard & Marilyn Miller, Rick Maron & Judy Eigenfeld, Robert & Elaine Freedman and family, Robert M. Berger, Roger & Lynn Lieberman Ritvo, Ruth & Alan Smith, Ruth & Edward Cogen, Sam & Rina Frankel, Saralee & Randall Luke, Selig & Faye Strassman, Sheila Brown, Shia & Rhoda Shapiro, Steve & Judy Willensky, Stuart & Terri Kline, Susan & Dan Swett, Susan Agate & Mike Slutsky, Tena Tarler Rosner, The Can-Do Fund, Vanessa DeGeorge, Wendy Shaw & Richard Spivak, Great Lakes Cheese, Gary Vanic, the Epprecht family, and the GLC Corp Management Team

Morris & Sylvia Barron Family Youth Fund

IMO Reverend Eli Levy by Lisa Barron Bonneau, Morry & Bonnie Barron, and Rita Barron

Miriam & Sol Brooks Leadership Fund

IHO Shayna Oif's marriage; and IHO Eric Ritter's marriage by Richard & Jackie Brooks

IMO Sol Brooks; and IMO Alice Nusbaum by Richard & Jackie Brooks

Nashim Education Fund for Women

Wishing Lisa Rzepka a speedy recovery by Julio Popovsky & Barbara Goldberg

In appreciation of Rabbi Skoff by Barry & Audrey Lowe
IHO Sandi & Martin Horwitz's new grandson by Bruce & Sharon Epstein

IHO Karen Jaffe by Rabbi Sharon & John Marcus

Park Preschool Discretionary Fund

IHO Hadas Galili's Bat Mitzvah by Lynn Gardner

Park Synagogue Programs & Services

In appreciation of my Aliyah by Annabelle Weiss

In appreciation of High Holiday services by Daniel & Miriam Rose, and Merle & Robert Kiwi

IHO being pulpit guests on Kol Nidre by Barry & Lynn Chesler

IHO Susanne Mars' birthday by Merle & Robert Kiwi

IHO Mitch Bass' birthday by Morgan Schreiber & Michael Jacobs

IMO Marcia Yasinow by Dennis & Karen Linden, Irving & Lillian Ullman, Sam & Rina Frankel, and Shia & Rhoda Shapiro

IMO Stuart Miller by Ernie & Eunice Benchell

Rabbi Armond & Anne Cohen Memorial Fund

IMO Samuel Cohen; and IMO Rebecca Cohen by Rebecca Long

Rabbi Joshua Skoff Discretionary Fund

A gift by Sam & Vicki Muschkin

In appreciation of Rabbi Skoff by Barbara Firstenberg, Herbert Weinberg and family, Judith Siegel, Michael & Cindy Duber, Rick & Janice Schwartz, Sandra Falck & Ira Lorber, and the family of Rudy Schor

In appreciation of our High Holiday honors by Bruce & Sharon Epstein

In appreciation of Simchat Torah Aliyah by Deborah Glass

In appreciation of Rosh Hashanah honor at the Bimah by Josh & Anne Sportas

In appreciation of our Aliyah on Kol Nidre by Michael & Barb Shapero

In appreciation of High Holiday services by Steven & Cynthia Rosenblatt

IHO the naming of our grandchildren by Alan & Debbie Malkin

IHO the birth of Grayson Maxwell King by Carole Weinberg

IHO Rabbi Skoff by Harley & Gail Cohen

IHO the publication of Maury Feren's new book by Josh & Anne Sportas

IHO the marriage of Shaina Oif & David Leb by Ken & Marilyn Oif

IHO Noah Shore's Bar Mitzvah by Michael & Kay Shore

IMO Steve Firstenberg by Barbara Firstenberg

IMO Arthur Feller by Dr. & Mrs. Jeffrey Silver

IMO Ron Berebitsky by Eric & Patty Rubin

IMO David J. Spevack by Geraldine Kahn

IMO Reverend Eli Levy by Harley & Gail Cohen

IMO Annette Mlotek by Helene Mlotek

IMO Rolf Kaufman by Mark Silverman & Lorie Gelb-Silverman

IMO Herschel Koblenz by the Koblenz family, and Sandy & Bernard Agin

Robert Leitson Memorial Fund

In appreciation of Marlene & Aaron Walter by Betty Fishman and Marilyn Brickman

Rabbi Sharon Marcus Discretionary Fund

In appreciation of Rabbi Marcus by Richard & Jackie Brooks, Sheila Waldbaum, and the Becker-Gutarts family

IMO David R. Arons by Alan & Marcia Arons

IMO Lea Schepps by Mary & Donald Perlmutter

IMO Esther Shapiro; IMO Jacob Shapiro; IMO Rose Prober; and IMO Gabriel Prober by Richard & Joanne Prober

IMO Harold Trattner by Robert Trattner

Rev Lev Memorial Fund

IMO Reverend Eli Levy by Alan & Marcia Arons, Alex & Toby Dybbs, Amy Kaplan, Barry & Susan Reis, Benjamin Rosner, Bernice Davis, Beth Weiner, Betty Bloomfield, Bluie & Kitty Greenberg; Charlotte, Jeffrey, Joel and Jordan Kaminsky; Cheryl Siegel, Chuck & Carole Faiman, Clifford & Linda Wolf, Daniel Marks, David & Enid Rosenberg, Debbie Bonhard and family, Dennis & Karen Linden, Dick & Charlene Ratner, Don & Judy Schermer, Doris Sopher, Dr. Avrum & Phyllis Froimson, Esther Berman and family, Florence Sable, Frances Feldman and family, Gary & Ellen Petler, Gary & Sue Katz, Gerald & Florence Lander, Gloria Resnick, Harold & Barbara Kaiman, Ina Burday; Isabelle, Dan & Kay Zuckerman; Jamie & Sharon Lebovitz, Jan & Terrie Kleinman, Jeff Ross, Joel & Deborah Glass, Ken Rapoport, Laura & Sanford Wallenstein, Laurie & Jeffrey Rozen, Leonard Mendel and family, Lillian Rubin, Lisa Barron Bonneau, Lois Joan Davis, Marc & Ann Freimuth, Marc Silverstein, Marcia & Lawrence Simon, Marilyn Matlow, Mark & Michael Weinberg, Marla & Joseph Shafran Foundation, Marty & Mary Jatlow, Marvin & Ieda Warshay, Mary Chaitoff, Mel & Harriet Morris, Melvin & Norma Weiner, Michael & Amy Diamant, Michael & Audrey Weiss, Michael & Cindy Duber, Mildred Zucker, Morton & Marcia Stone, Mr. & Mrs. Donald Jaffe, Mr. & Mrs. Steven Kaufman, Dr. & Mrs. Charles Jaffe, Myrna Arlen Bloch, Nancy & Sheldon Hartman; Nancy, Pamela and Larry Kekst; Neil Blum & Gail Kamen, Norman & Toby Bresky, Paul B. Berman, Peter & Aiki Rzepka, Phyllis & Jerry Wachs, Rachael Rosner & Larry Denenberg, Rebecca Long, Rhoda & Herbert Agin, Richard & Jackie Brooks, Richard & Susan Leiken, Rick Maron & Judy Eigenfeld, Sam & Rina Frankel, Selig & Faye Strassman, Sheila Arnoff Hirsch, Shia & Rhoda Shapiro, Sol & Edith Sherwin, Tena Tarler Rosner, Will & Jan Sukenik, and Edgerton Investments on behalf of Charlotte Goldberg, Robert Goldberg, Gerald & Nancy Goldberg, David & Brenda Goldberg, Jacqueline & Jeffrey Ponsky and Bonnie & Larry Frankel.

Ruth & Carl Jacobs Library Shelf Fund

IMO Albert Glaser by Ruth Jacobs

Sanford Juntoff Religious & Education Fund

IHO Linda & Larry Rich's 50th wedding anniversary by Steve & Helen Ehrlich

IMO Marcia Yasinow by Steve & Helen Ehrlich

IMO Reverend Eli Levy by Terry Juntoff

Senkfor Family Educational Scholarship Fund

IHO my Aliyah by Allan Farkas

IMO Rochel Farkas by Allan Farkas

Sheldon Perry Library Plaque Fund

IMO Harold Trattner by Carol Trattner

The Marilyn H. Berger Memorial Fund

IMO Margaret Tesler by Irving Berger

IMO Mrs. Marilyn Berger; IMO Mr. & Mrs. Albert Berger;

IMO Mr. Sandy Berger; IMO Mr. & Mrs. Louis A. Blue;

IMO Mr. & Mrs. Abe Joseph; IMO Mr. & Mrs. William

Blusinsky; and IMO Mrs. Margie Tesler by Mr. & Mrs.

Alan Berger and Mr. & Mrs. Dennis Williams

Wolf Religious School Discretionary Fund

IMO Lea Schepps by Marcia, Kenny and Daniel Wexberg

THE PARK SYNAGOGUE BULLETIN

(USPS 422-060) Periodicals Postage Paid at Cleveland, Ohio
Vol. LXXXIX No. 40
Published monthly ©The Park Synagogue
27500 Shaker Blvd., Pepper Pike, OH 44124-5050
POSTMASTER send address changes to the address above.
www.parksyn.org
Telephone: (216) 371-2244 Fax: (216) 321-0639
Annual subscription \$25.00

Joshua Hoffer Skoff, Senior Rabbi
Leighton A. Rosenthal Chair in Rabbinics
Sharon Young Marcus, Associate Rabbi
Milton B. Rube, Rabbi-in-Residence
Misha Pisman, Cantor
Gadi Galili, Ritual Director

Kenneth Anthony, Executive Director
Teri Rube Hochberg, Director of Education
Anne Sportas, Preschool Director

Ellen Petler, Membership and Program Director; Judy Kaufman,
Development Director, Jenni Thomas, Communications Director/
Bulletin Editor; Dan Polster, Confirmation Class Coordinator;
Michael Rubin, Day Camp Director.

OFFICERS

President **Andrew E. Randall**
V.P. – Administration **Robert Kwait**
V.P. – Communications **Sharon Lebovitz**
V.P. – Education / Youth **David Kaufman**
V.P. – Membership **Frederic Levine, M.D.**
V.P. – Special Projects **Judy Klein Willensky**
Treasurer **Ira Goffman**
Recording Secretary **Lisa Cynamon Mayers**
Legal Counsel **David Adler**

DATED MATERIAL DO NOT DELAY
PERIODICAL



Birthday Club

November birthdays will be honored on
Saturday, November 16.

RSVP to Eva by **Wednesday, November 13** at
eva@parksyn.org or **(216) 371-2244, ext. 127**,
so your child can be called to the Bima in honor of his/
her birthday and receive a gift!
Children 12 and under are eligible.

Sponsored through the generosity of the Lois Sherman Children's Fund.

THE PARK MEN'S CLUB SPEAKERS' SERIES PRESENTS

WEALTH MANAGEMENT AT A CROSSROADS: Responding to a Changing Financial World

Join us for one or all of these seminars in a three-part series featuring local financial experts.
Admission includes a continental breakfast served at **9:30 am**, followed by the presentation at
9:50 am. All seminars are held at **Park Synagogue East**. The series is chaired by **Denny Linden**
and **Tom Sudow**. **Dan Silverstein** is the Men's Club President.

SUNDAY, NOVEMBER 3



PAYING FOR COLLEGE: TRICKS OF THE TRADE

Saving for College Using Section 529 and Other Investment Opportunities with
Alan Yanowitz, financial advisor at Creekside Financial Advisors, LLC.

Federal and Ohio Education Credits and Tax Deductions with **Denny Linden**,
Director at CBIZ MHM, LLC.



SUNDAY, NOVEMBER 10

U.S. & WORLD ECONOMY

Where is the U.S. and World Economy Headed? with **Mark Sniderman**, Executive Vice
President and Chief Policy Officer at the Federal Reserve Bank of Cleveland



SUNDAY, NOVEMBER 17

PREPARING TODAY FOR RETIREMENT AND ESTATE PLANNING

Understanding Retirement Planning and Tax Advantages with **Ron Gross**,
President & CEO, MGO, Inc.

Estate Planning for Young and Old with **Neil Gurney**, Partner at Ulmer Berne LLP.

RSVP NOW

Cost for Full Series

Men's Club Members: \$21
Others: \$30

Cost per Session

Men's Club Members: \$9
Others: \$12

RESERVE YOUR SEAT TODAY!

Register online on the Park
Men's Club website:

www.parkmensclub.org

or

mail check (payable to Park
Men's Club) and indicate
which seminar(s) you will
attend to: **Tom Sudow**,
3665 Tolland Road,
Shaker Heights, Ohio 44122

If you have any questions,
please contact Tom at
tsudow@fjmc.org.